

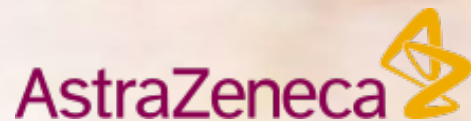


This is an official ANZSN (RACP) course for trainees in Nephrology.

“Unravelling the Secrets of Kidneys”

22 May & 19 June 2021

Proudly Sponsored by:



Register for the Course - <https://www.nephrology.edu.au/basic-course-2021.asp>



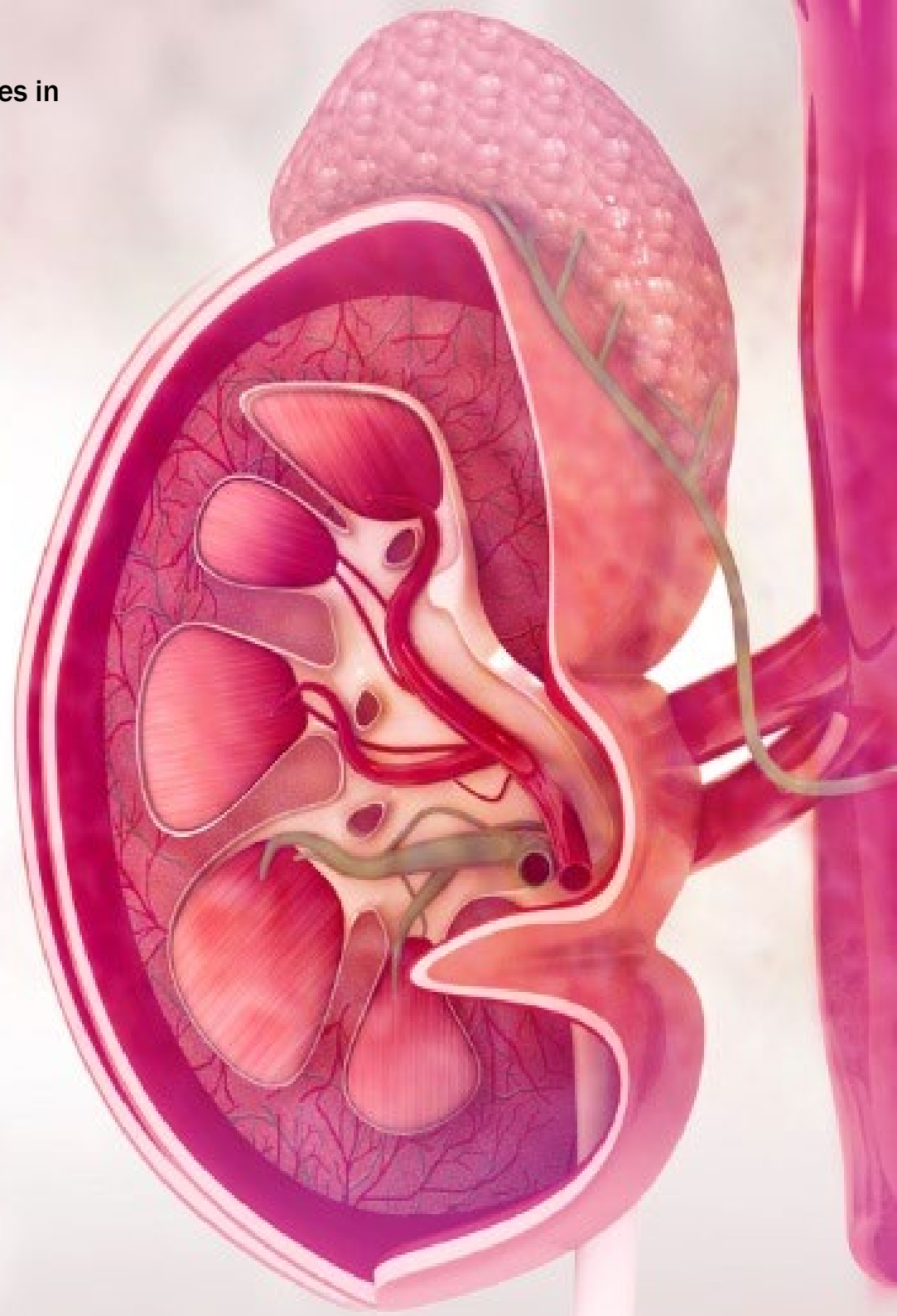
This is an official ANZSN (RACP) course for trainees in
Nephrology and General Medicine

“Unravelling the Secrets of Kidneys”

Advancing Trainee Knowledge and Understanding in Nephrology

Program

Virtual



Saturday May 22, 2021

| Time | Topic | |
|-------------------|--|-----------------------|
| 8.30am – 9.10am | Kidney Health 101 | Sine Donnellan |
| 9.10am – 9.50am | Pathogenesis and prevention of acute kidney injury | Martin Gallagher |
| 9.50am – 10.10am | Morning Tea | |
| 10.10am – 10.50am | Advances in the management of CKD | James Collett |
| 10.50am – 11.30am | Hypertension – Essential and Refractory | Muh Geot Wong |
| 11.30am – 12.10am | Genetic Kidney Disease | Amali Mallawaarachchi |
| 12.10pm – 12.45pm | Lunch | |
| 12.45pm – 3.30pm | Concurrent Workshops | |
| | Chronic Kidney Disease Case Studies | Rob Mac Ginley |
| | GN Case Studies | Muh Geot Wong |
| | Kidney Physiology for Clinicians | Surjit Tarafdar |
| 3.30pm – 3.50pm | Afternoon Tea | |
| 3.50pm – 4.30pm | Advances in anaemia and bone health | Adam Mullan |
| 4.30pm – 5.10pm | Acute Vasculitis and its treatments | Limy Wong |
| 5.10pm – 5.30pm | Wrap up and discussion | |



Saturday June 19 2021

| Time | Topic | |
|-------------------|--|-----------------|
| 8.00am – 8.30am | Registration & Welcome | |
| 8.30am – 9.10am | Getting to Grips with dialysis and transplantation | David Voss |
| 9.10am – 9.50am | Transplantation Immunosuppression Review | Michael Collins |
| 9.50am – 10.10am | Morning Tea | |
| 10.10am – 10.50am | High quality Haemo dialysis care and common problems | David Voss |
| 10.50am – 11.30am | Care of the transplant patient | Carolyn Clark |
| 11.30am – 12.10am | The New PD Guidelines | David Johnson |
| 12.10pm – 12.45pm | Lunch | |
| 12.45pm – 3.30pm | Concurrent Workshops | |
| | Monthly Bloods/ Access Monitoring/ Satellite Unit work | Rob Mac Ginley |
| | Transplant cases | Carolyn Clark |
| | Dialysis Cases | John Saunders |
| 3.30pm – 3.50pm | Afternoon Tea | |
| 3.50pm – 4.30pm | The Heart and Kidney Connection | Matthew Roberts |
| 4.30pm – 5.10pm | Supportive Care – meeting the needs of our patients | Kathryn Duchlet |
| 5.10pm – 5.50pm | Wrap up and discussion | |
| 5.50pm – 6.00pm | | |

